

SmartCampus 2015

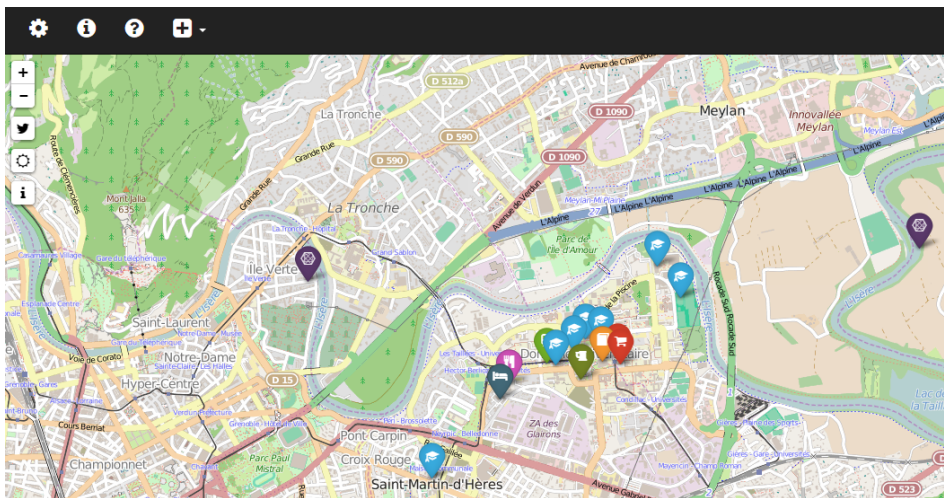
ONE SENSOR TO RULE THEM ALL, ONE SENSOR TO FIND THEM,
ONE SENSOR TO BRING THEM ALL AND IN THE CAMPUS BIND THEM.

You want to know more about your campus ?

You can do it with SmartCampus. In fact, you will access to some data about sensors.

Graphics will appear in front of your eyes.

You will see data in real time so you are sure the data are correct.

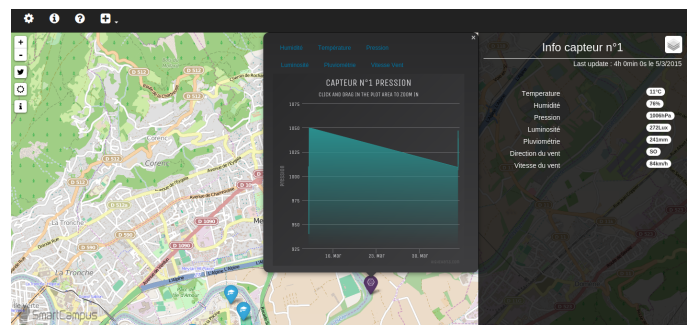


Our technologies reach unmatched communication distance. Indeed, we could reach distances superior to 20 kms.

Next year, an application to track in real-time the localisation of Grenoble Tramway will be built. This project will use the same technologies as now.

Our web site is really user friendly.

You just need to click on an item to access to this data (temperature, pressure etc...)



► PROJET RICMS :

► SMARTCAMPUS 2015

BARBIER Jérôme,
HUSSON Augustin,
LABAT Paul,
SAMBE Adjji,
FREBY Rodolphe.

All you need is a sensor :

