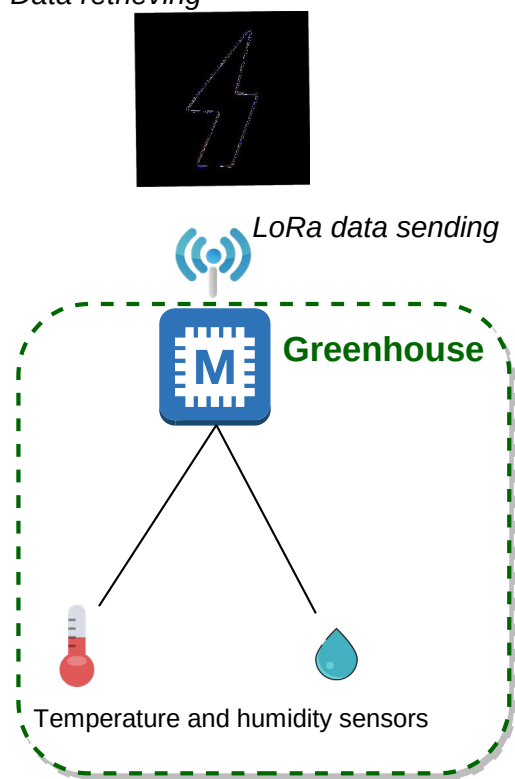
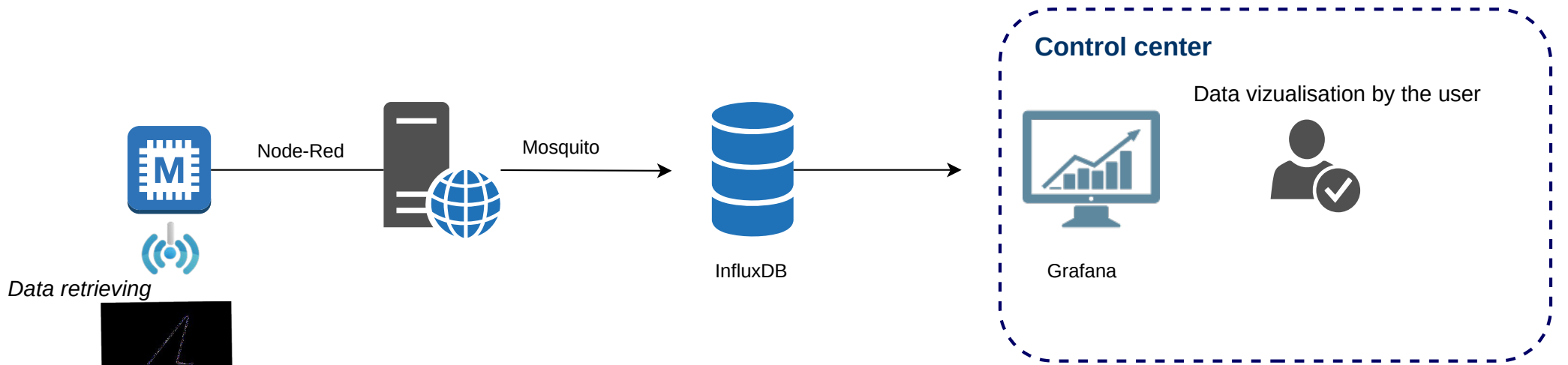


I-Greenhouse

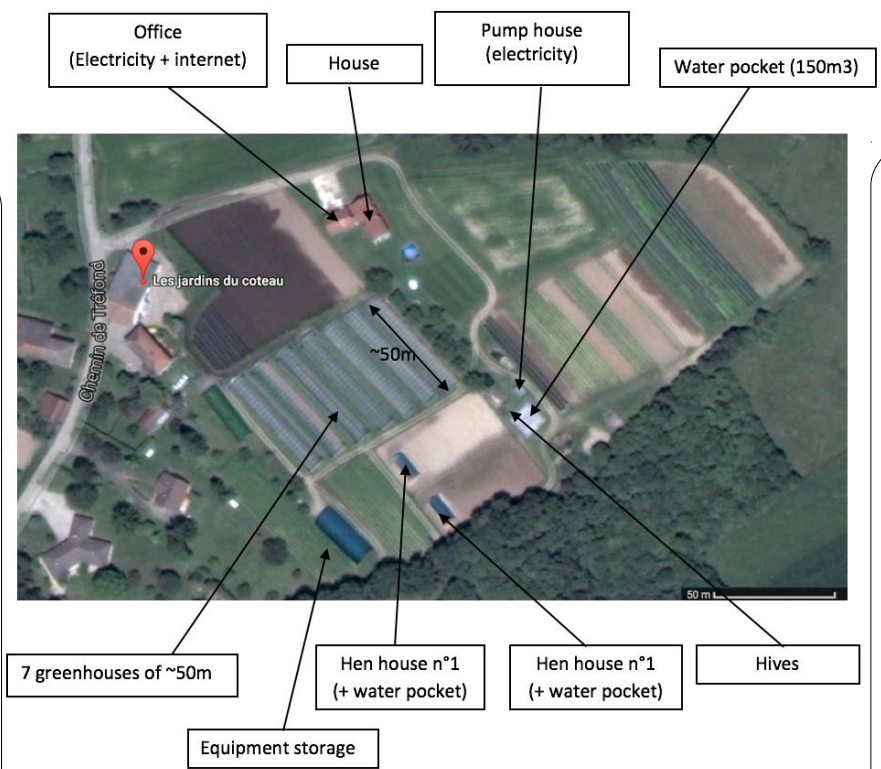


Monitor real-life greenhouse
for organic and auto-production agriculture
with LoRa and SigFox
endpoints and low-cost gateways



Open Hardware

Adafruit Feather
LoPy SiPy
STM32 Nucleo



Open Software

node JS, mosquitto, InfluxDB, docker, Node-RED, Grafana



Grafana to display data

Le projet en quelques mots :

- Plusieurs capteurs différents
- Amovible pour permettre le passage des machines
- Visualisation de l'état de la serre à distance, simple et claire

LoRa technology:



- Energetic consumption minimised
- Ultra high range
- High immunity against interferences



With the cooperation of FabLab of Grenoble for the supply of materials as well as cut laser of our model