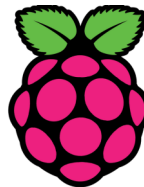


## The project

The aim of our project is to make a smart campus. For this to happen, several sensors have been deployed in different places and will send information in real-time (temperature, pressure, humidity, etc...).

To visualize those data, the users just have to connect to our web site. Then, they will be able to display real time graphics about one specific sensor.

## Technologies



RaspberryPi



ARM<sup>®</sup>mbed™



## Projet RICM 5

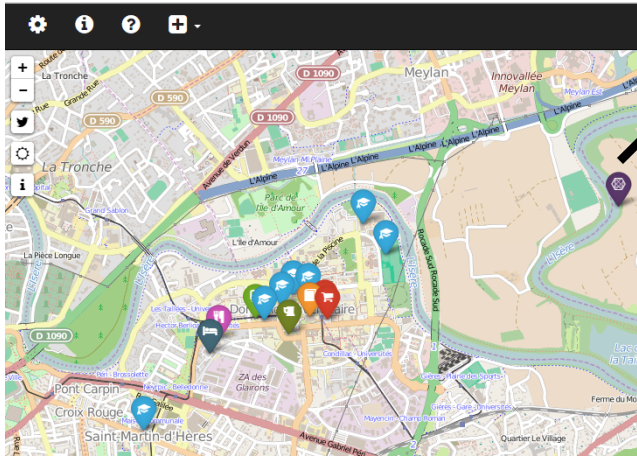
*One Sensor to rule them all,  
One Sensor to find them,  
One Sensor to bring them all  
and in the Campus bind them.*

## SmartCampus 2015

*Հոնաբարհարկ է՝ հոնաբարձ է  
հոնաբարձ է՝ արհեստագործ է*

BARBIER Jérôme,  
HUSSON Augustin,  
LABAT Paul,  
SAMBE Adji,  
FREBY Rodolphe.

# Our Application



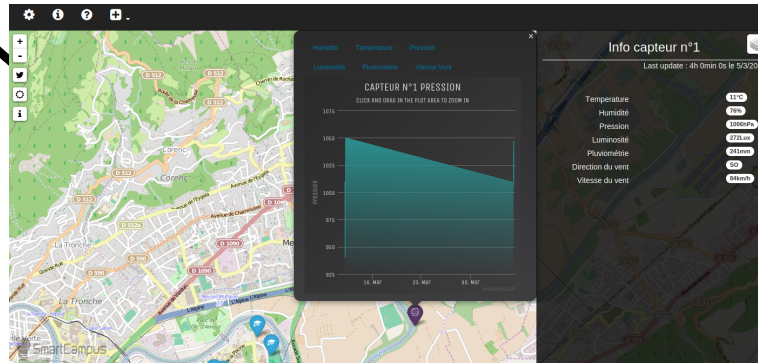
Just click on an item to get some information about it.

Our web site is really user friendly.

You just need to click on an item to access to this data (temperature, pressure etc...)

All sensors will show you graphics with all associated data.

If the item is a sensor, a pop-up will show you all associated data.



All data are sent to the database each hour.

# Global architecture

