

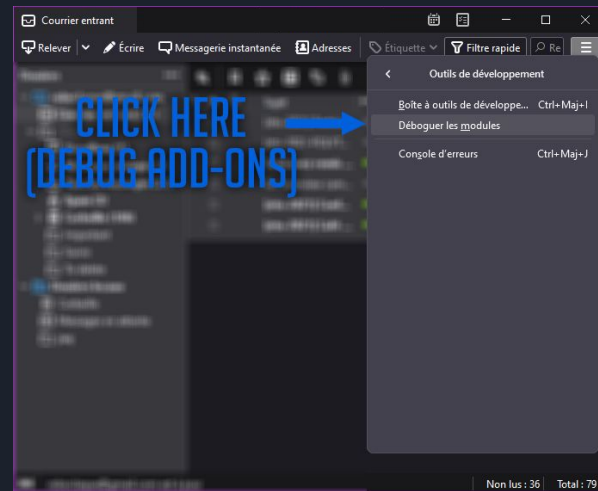
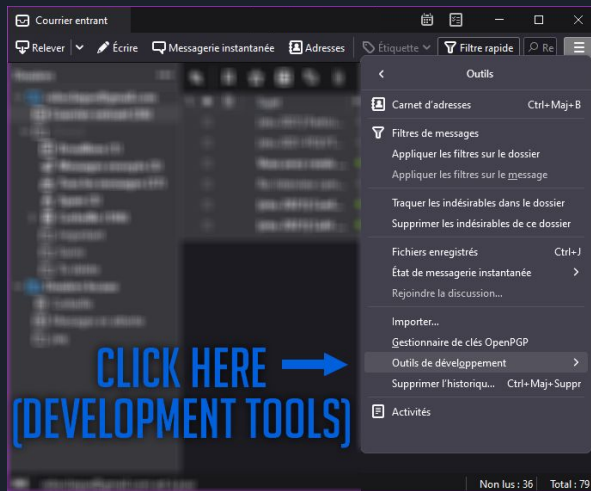
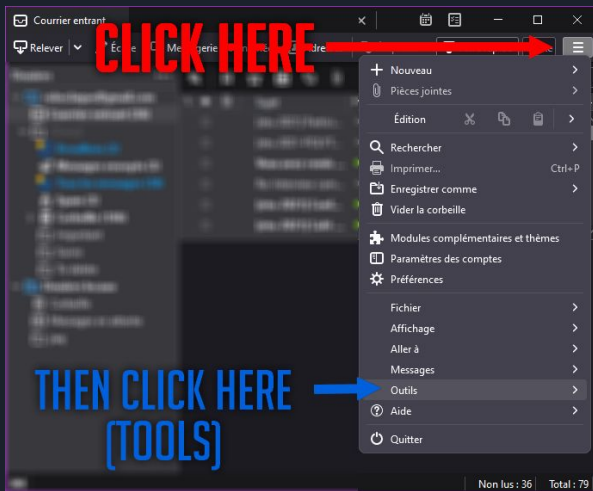
How to use : Planned Deletion Emails



CANIN Corentin
MONTEILLER Joshua
WAGNER Samy

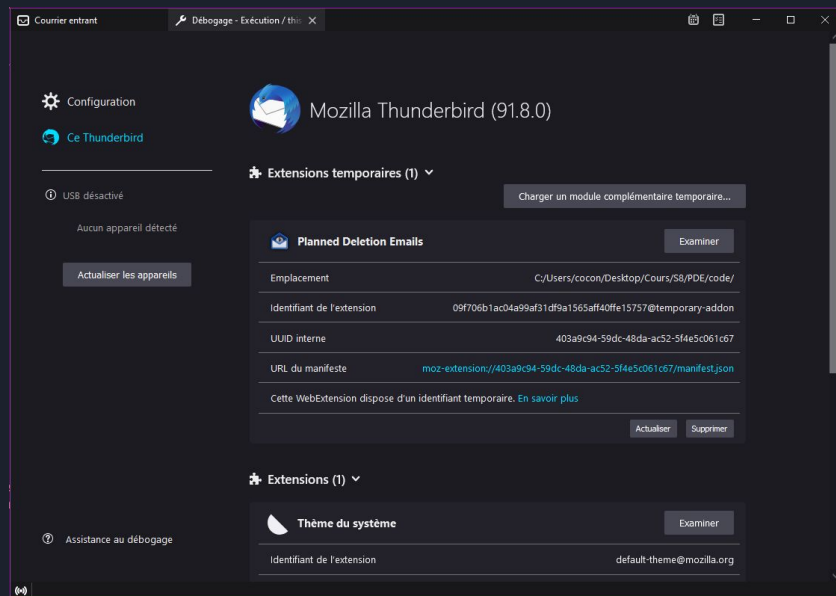
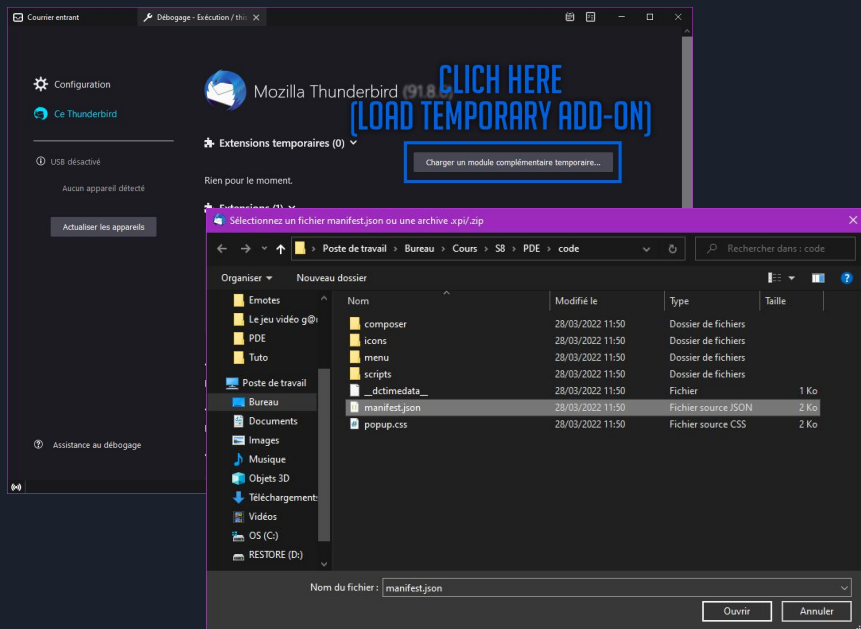
How to install a temporary add-on in Thunderbird ?

Unfortunately, Planned Deletion Emails is not a Mozilla-approved signed add-on. You will have to rely on debug mode to install and try it. Here is how to do this:



How to install a temporary add-on in Thunderbird ?

Finally, select the manifest.json from the Planned Deletion Emails source files.



Done !

How to use the setup pop-up in Thunderbird ?

Now that you have successfully installed the add-on, a new button appears in the top-right corner of your Thunderbird client:

CLICK HERE

SELECT YOUR ACCOUNT:

SETUP YOUR TRASH FOLDER:

SETUP THE DELETION FREQUENCY:

MANUALLY TRIGGER THE DELETION:

Planned Deletion Emails

Account:

Trash folder

Choose where expired emails should be moved.

Check frequency

Choose how often we should check for expired emails, in minutes.

minute(s)

Manual check

Manually find and delete expired emails.

Non lus : 36 | Total : 79

How to use the Deletion Condition pop-up ?

Now, when you write a new email, a new button appears in the top-right corner, click it to display the DC pop-up:

The screenshot shows the Thunderbird interface with a purple title bar. The menu bar includes 'Fichier', 'Édition', 'Affichage', 'Insérer', 'Format', 'Options', 'Outils', and 'Aide'. The toolbar contains 'Envoyer', 'Orthographe', 'Sécurité', and 'Enregistrer'. A red arrow points to a button labeled 'Planned Deletion Emails' in the top-right corner. The dialog box is titled 'Auto delete emails' and contains two options:

- On date: [jj / mm / aaaa] [00 : 00]
- On reading: + [0] year(s) [0] month(s) [0] day(s) [0] hour(s) [0] minute(s)

Blue annotations include:

- Text: 'TICK THIS BOX IF YOU WANT THE EMAIL TO BE DELETED ON A FIXED DATE. SETUP THE DATE AND TIME OF DELETION' with an arrow pointing to the 'On date' option.
- Text: 'TICK THIS BOX IF YOU WANT THE EMAIL TO BE DELETED AFTER A CERTAIN AMOUNT OF TIME FOLLOWING ITS READING. SETUP THIS AMOUNT OF TIME.' with an arrow pointing to the 'On reading' option.

How to use the Deletion Condition pop-up ?

This will create an attachment to your email. It stores all the data needed to know when to delete the email.

If the person you are sending this email to has Planned Deletion Emails installed on their Thunderbird client, it will handle the rest.

