

**Authors:** Antoine GITTON, Mathis MUTEL, Victor MALOD  
**Client:** Fabrice FOREST

## What can be improved in the daily of a farmer?

As a farmer, you want to be informed of events in your farm, in real time.

You may want to check on the status of your animals, with different variables:

- Their **location**
- Their **temperature**
- Their **methane** levels
- Whether their **water tank is frozen** in winter
- Whether the **livestock fence-gate** is closed...



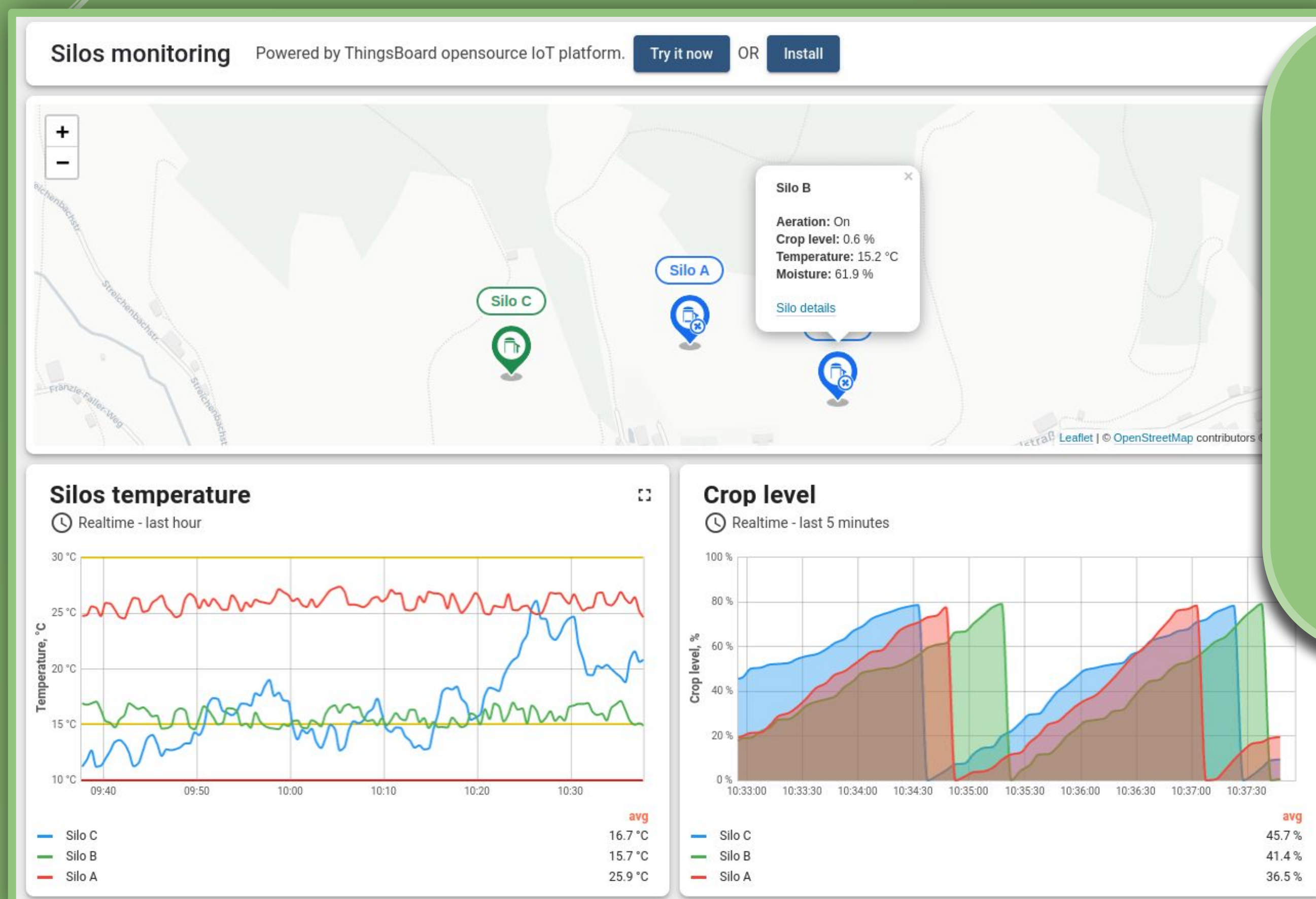
## How do we improve a farmer's life?

We need to be informed about our animals!

- To react **better**
- To react **faster**
- To **save their life**

In winter, you are checking the temperature of your water tank every so often to ensure it is not frozen...

If one of your cow gets sick and becomes feverish, you need to be taking care of it as soon as possible!



## What we do to improve it!

We are offering you the possibility to **get an overview of your farm** through the use of sensors.

Usable data will be displayed by a **web application** or **smartphone app**, that can be accessed at anytime.

You can quickly get the information you are looking for, and see the **live data**, as well as an **history**.

Installing sensors will enable you to **receive an alert** if a critical threshold is reached, without realizing it when it will be too late.

## Our solution



### Sensors

The combination of IOT sensors and LoRaWAN allows us have a **real time** and **low power consumption** communication

**LoRaWAN™**



### AgriLoRa backend

We made an **efficient** Spring based **API service** for storing and delivering sensor information



### AgriLoRa web-app

We built an **easy-to-use**, **mobile-first** experience. We use Nuxt for its ability to be **cross-platform** and its **reactivity** to user interactions

## Conclusion

- Managing a farm is hard, and we are trying to **make it simpler** for their farmers!
- Sometimes, lack of information can lead to the death of animals in the farm. Our goal is to **inform and alert**, to help prevent this.
- AgriConnect is **easy to setup**, **easy to use**, and **easy to extend**. Installing a new sensor is as easy as entering a code.
- Our app will help you monitor **issues** in **real time** and to **receive alerts** as soon as possible when a threshold is reached.