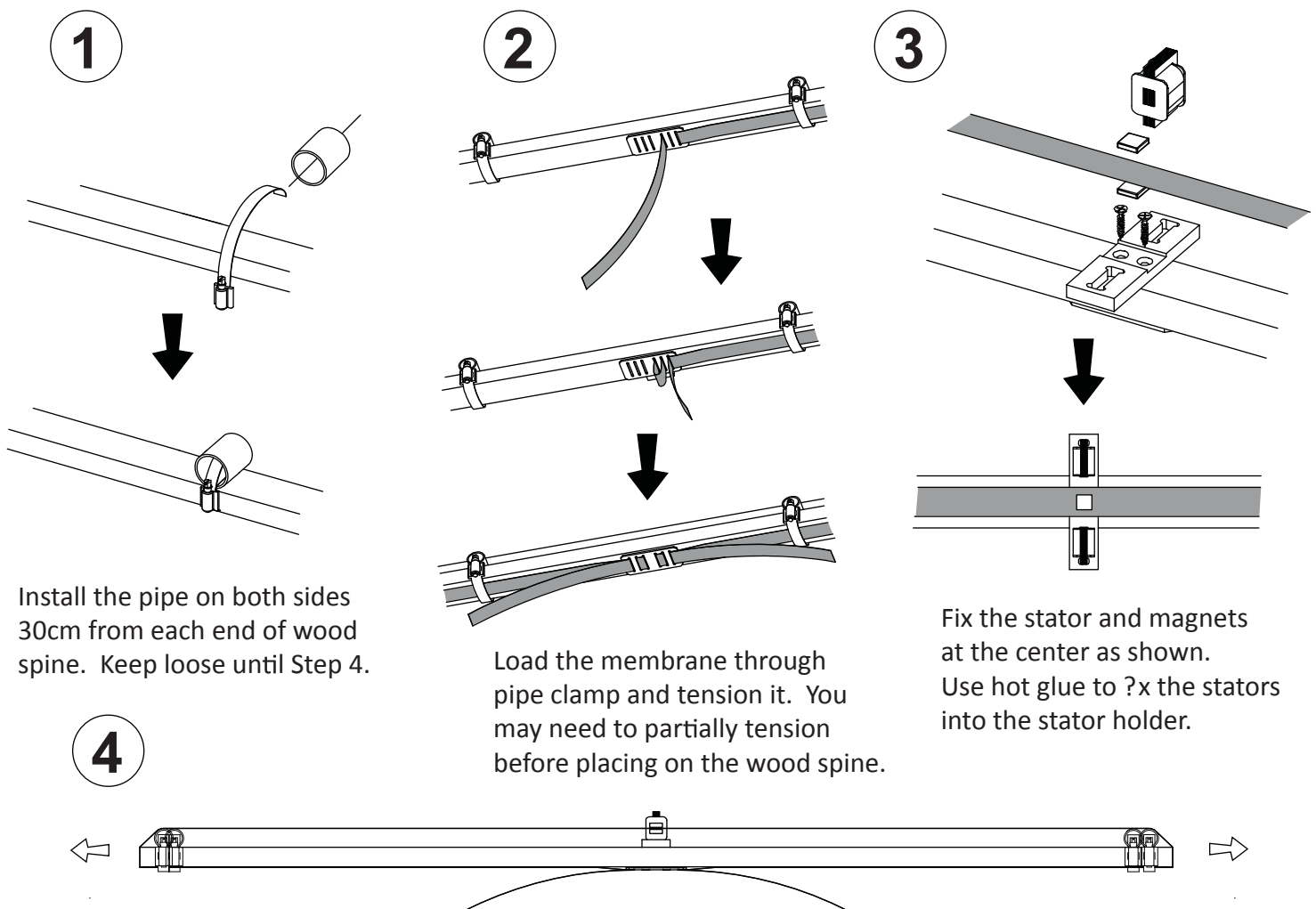
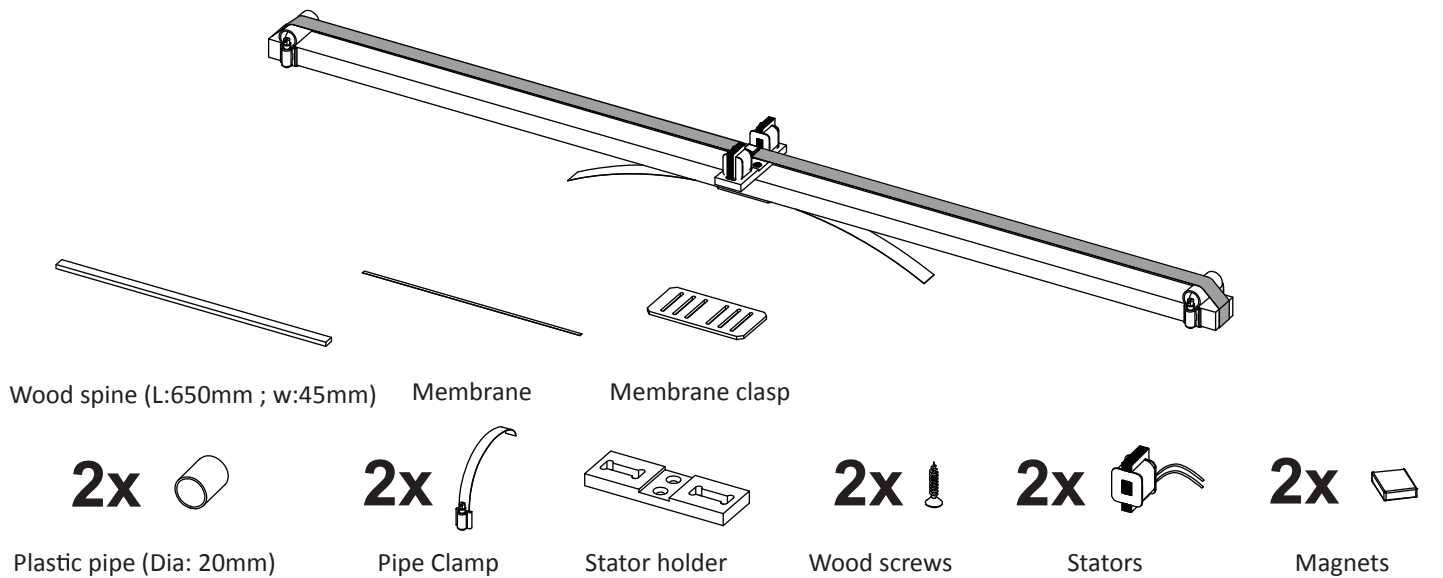


Windcell Maker Kit

Super Basic Assembly Guide



Finally, adjust the pipe position to optimize the output, and then tighten pipe clamps. You can also apply additional tension by placing blocks of wood between the wood spine and the membrane clasp. Note: The membrane should torsionally vibrate at around 20-50 Hz.

*The wires on the Stator can be directly connected to LEDs or rectified with a Shottky rectifier for charging batteries, playing radios, or powering higher-power LEDs.