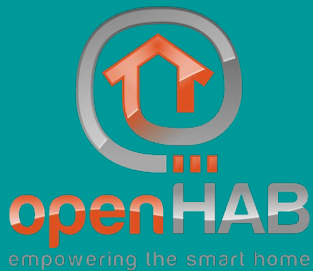


Integration of UPnP cameras in OpenHab



Tuteur : Didier Donsez

Project Description:

OpenHab is an Open Source project that aims to allow control of equipments in a network by catching events. It also offers a nice user interface which is easy to configure.

The objective of the project is to be able to display video streams from cameras supporting the UpnP technology, and also to be able to remotely control them via OpenHab. A list of cameras that have been discovered will be displayed will be displayed in the OpenHab interface. Furthermore, a mosaic of all cameras will be available, and every still image of a camera is a link to the associated video stream and remote control options.

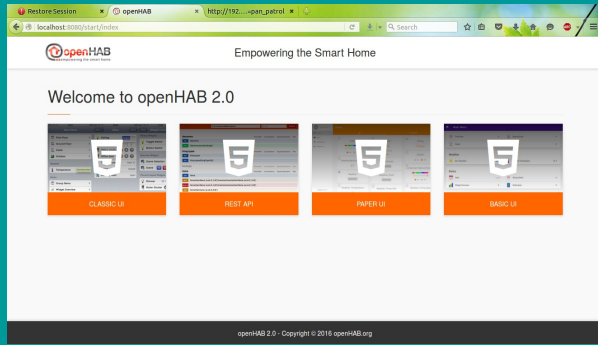
DSC-932L Camera, supporting UPnP :



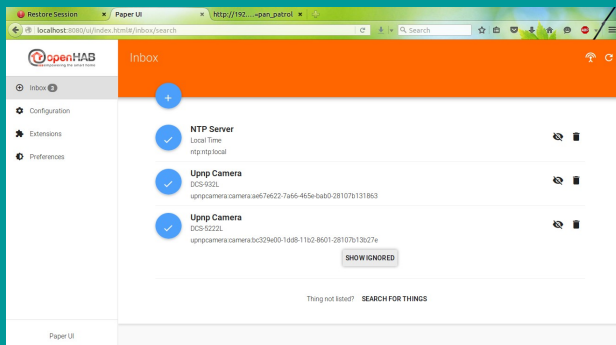
DSC-5222L Camera, supporting also UpnP, and equipped pan and tilt :



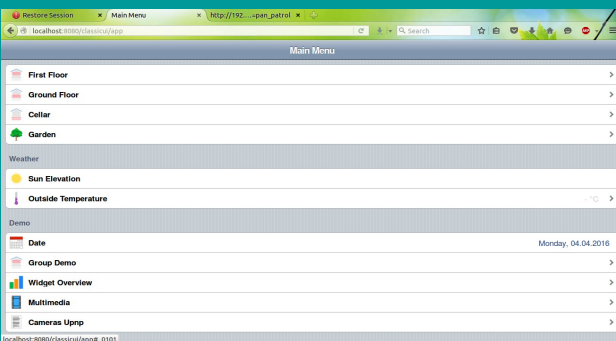
L'interface Openhab



Configuration : paper UI to configure the cameras



Interface Utilisateur : classic UI to access the camera management interface



Eclipse Smart Home



Eclipse SmartHome is a flexible framework that helped us to develop a new binding to discover the UPnP cameras located in a network. We also continued to use the IDE to easily compile and run the modifications, we made in the ESH extensions project that basically contains the code of the UI. We introduced a new version of the « widget webview ».

We have added some other classes to collect the discovering result of cameras via the REST API with http request. In fact, we build the right URL according to the information given by a catalog and the IP address in the RestRenderer result.

